



**Suspension**  
**MAXX**  
ADVANCED LEVELING LIFT KITS

**2018 CATALOG**

# TABLE OF CONTENTS

|                        |       |
|------------------------|-------|
| <b>CHEVROLET • GMC</b> | 3-11  |
| <b>HUMMER</b>          | 12    |
| <b>DODGE • RAM</b>     | 13-16 |
| <b>FORD</b>            | 17-20 |
| <b>TOYOTA</b>          | 21-22 |
| <b>MAXXLINKS</b>       | 23-27 |
| <b>ACCESSORIES</b>     | 28    |
| <b>PARTS LIST</b>      | 29-32 |

## KEY

### SKILL LEVEL

- E** EASY
- M** MODERATE
- A** ADVANCED  
Professional installation recommended

### OTHERS

- 2 HR** INSTALLATION TIME
- 32"** TIRE SIZE
- ADJUSTABLE HEIGHT**
- TORSION BAR TOOL REQUIRED**
- 2011 TORSION BAR TOOL REQUIRED**

## WHO WE ARE

Welcome to the world of SuspensionMAXX! A place where trucks rule, excuses will get you nowhere, and quality means everything! Not just the quality of our products, which we firmly believe is second to none, but also the level of quality at which we do business. At SuspensionMAXX we constantly strive to assure our customers are getting the 'MAXXimum' part purchasing experience for their hard earned buck. Extensive testing & development, products that last long & fit right, a knowledgeable tech & sales staff, and a far reaching dealer network are just some of the many steps we take to ensure your 'MAXXimum' satisfaction!



## Why buy Suspension Maxx?

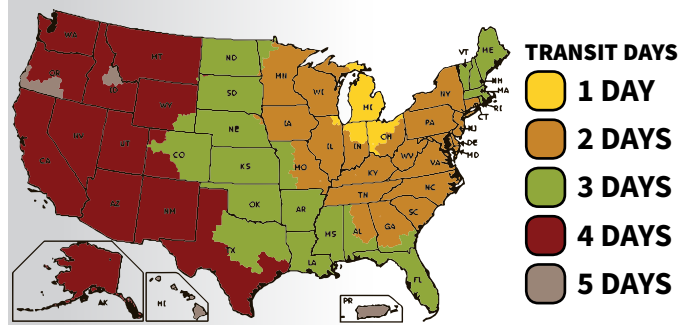
- Superior build quality manufactured from high strength heat treated steel and cast aluminum construction.
- We stand behind our leveling kits with a **Lifetime Structurally Warranty.**
- Retains factory Ride
- Allows for installation of larger tires and custom wheels.
- Easily installs in 2-3 hours and at fraction of the cost of a full lift kit.
- Kits include all necessary hardware to level your truck including shock extensions and differential lowering hardware.

1

## GET WHAT YOU NEED, WHEN YOU NEED IT!

Same day shipping or next business day. UPS delivery guaranteed in 3-5 days for domestic & international shipments.

### UPS GROUND SHIPPING MAP



## TORSION BAR UNLOADER TOOL

### SMX-2011MT

The latest & greatest torsion bar installer tool for all torsion bar trucks including 2011-2018 GM 2500HD /3500HD trucks, and Ford Ranger / Explorer Sport Trac. The 2011 MT tool works on older model torsion bar vehicles as well.



SMX-2011MT  
\$169<sup>95</sup>



**Don't get STUCK with a U-bolt style tool that FAILS half way through the install. Get a torsion bar unloader tool that is BUILT TO LAST!**

- 25% More Heat treated 4140 Alloy Steel
- Powder Coated
- Knurled locator pin for easier placement
- 50% larger coarse threaded lead screw for faster operation and longer life.
- Anti rotation hex keeps the tool from twisting when supported by a box end wrench
- \*Life time structural warranty on the tool frame

*\*Excludes misuse, abuse and does not cover the lead screw & Threads.*

### TORSION BAR UNLOADER TOOLS

| Description   | Price    | Part Number                |
|---|----------|----------------------------|
| Torsion Bar Tool fits all models <b>INCLUDING</b> 2011-2018 GM 2500HD/3500HD, Ford Ranger/Explorer/Sport Trac | \$169.95 | <a href="#">SMX-2011MT</a> |

# CHEVROLET • GMC

## 2007-2018 1500 SILVERADO/SIERRA

### MAXXSTAK

SKU# SMX-GM725/GM725M

- Adjustable Lift Height 1.5- 2.5"
- Maintains factory ride quality
- Heat treated 4140 Alloy Steel
- Polyurethane high density lift spacers to dial in the correct lift height
- 275/60/20" or 33" equivalent on factory wheels or Positive offset wheel



|                     |                     |
|---------------------|---------------------|
| GM725               | GM725M              |
| \$159 <sup>95</sup> | \$169 <sup>95</sup> |

### MAXXSTAK

SKU# SMX-GM715/GM715M

- Lift Height 1.5"
- Maintains factory ride quality
- Heat treated 4140 Alloy Steel
- Grade 8 hardware
- Easy to Install



|                    |                    |
|--------------------|--------------------|
| GM715              | GM715M             |
| \$79 <sup>95</sup> | \$89 <sup>95</sup> |

### MAXXSTAK

SKU# SMX-GM710/GM710M

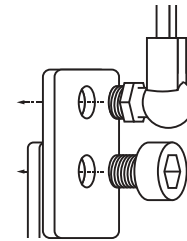
- Lift Height 1.0"
- Maintains factory ride quality
- Heat treated 4140 Alloy Steel
- Grade 8 hardware
- Easy to Install



|                    |                    |
|--------------------|--------------------|
| GM710              | GM710M             |
| \$69 <sup>95</sup> | \$79 <sup>95</sup> |

### MAGNETIC-RIDE-CONTROL VEHICLES

SMX-GM725M/GM715M/GM710M (M) models Include a bracket which compensates for increased lift height when connecting the Magnetic-Ride-Control sensor to the vehicle frame.



### MAXXCAM 2

SKU# SMX-MC2

- Adjustable Lift Height 1-2.75"
- Shock Extensions Included
- Maintains factory Ride Quality
- Heat treated 4140 Alloy steel
- Powder Coated Finish
- Torsion bar tool required
- 285/75/16 or 33" equivalent on factory wheels or positive offset wheel



SMX-MC2

**\$249<sup>99</sup>**



### 1500 SILVERADO/SIERRA FRONT LEVELING KITS

| Year Range | Make          | Model  | Lift Height | Tire Size | Price    | Part Number                |
|------------|---------------|--|-------------|-----------|----------|----------------------------|
| 2015-2018  | Chevrolet/GMC | 1500 Silverado/Sierra Denali w/ MagneRide                              | 1.5-2.5"    | 33"       | \$169.95 | <a href="#">SMX-GM725M</a> |
| 2015-2018  | Chevrolet/GMC | 1500 Silverado/Sierra Denali w/ MagneRide                              | 1.5"        | N/A"      | \$89.95  | <a href="#">SMX-GM715M</a> |
| 2015-2018  | Chevrolet/GMC | 1500 Silverado/Sierra Denali w/ MagneRide                              | 1"          | N/A"      | \$79.95  | <a href="#">SMX-GM710M</a> |
| 2007-2018  | Chevrolet/GMC | 1500 Silverado/Sierra  | 1.5-2.5"    | 33"       | \$159.95 | <a href="#">SMX-GM725</a>  |
| 2007-2018  | Chevrolet/GMC | 1500 Silverado/Sierra  | 1.5"        | N/A"      | \$79.95  | <a href="#">SMX-GM715</a>  |
| 2007-2018  | Chevrolet/GMC | 1500 Silverado/Sierra  | 1"          | N/A"      | \$69.95  | <a href="#">SMX-GM710</a>  |
| 1999-2007  | Chevrolet/GMC | 1500 Silverado/Sierra "Classic" 6 bolt 4x4s Full-size w/ torsion bars  | 1-3"        | 33"       | \$249.95 | <a href="#">SMX-MC2</a>    |
| 1988-1998  | Chevrolet/GMC | K1500 Silverado/Sierra "Classic" 6 bolt 4x4s Full-size w/ torsion bars | 1-2"        | 33"       | \$249.95 | <a href="#">SMX-MC2</a>    |

# CHEVROLET • GMC

## 2011-18 2500/3500 SILVERADO/SIERRA



### MAXX Travel Upper Control Arms

SKU# SMX-11H DUCA

- Fully tubular robust control arm
- Designed for 2-3" of lift
- Provides added ride height and increased travel
- Fabricated from 1-3/4" x 3/16" wall, 80,000 tensile strength DOM tubing and weighing in heavier than OE cast design
- High density polyurethane bushings with grease fittings
- Extra large control arm sleeves for increase clamping force
- Press-in high quality greasable Moog ball joint

**E** **4**  
HR

SMX-11H DUCA

\$599<sup>99</sup>



## 2017-18 2500/3500 SILVERADO/SIERRA

### MAXXCAM 7

SKU# SMX-MC7

- Adjustable Lift Height 1-2.5"
- Shock Extensions included
- Extended length shock studs
- Differential relocation included
- Maintains factory ride quality
- Heat treated 4140 alloy steel
- Powder coated finish
- SMX-2011MT Torsion bar tool required
- Factory wheels or Positive offset wheel, Max tire size of (275/65/20) or (295/65/18) both equivalent to 34"

**M** **2.5** **34"** **2017**  
HR

SMX-MC7

\$336<sup>95</sup>



## 2015-16 2500/3500 SILVERADO/SIERRA

### MAXXCAM 5

SKU# SMX-MC5

- Adjustable Lift Height 1-2.5"
- Shock Extensions included
- Differential relocation included
- Maintains factory ride quality
- Heat treated 4140 alloy steel
- Powder coated finish
- SMX-2011MT Torsion bar tool required
- Factory wheels or Positive offset wheel, Max tire size of (275/65/20) or (295/65/18) both equivalent to 34"

**M** **2.5** **34"** **2017**  
HR

SMX-MC5

\$306<sup>95</sup>



# CHEVROLET • GMC

## 2011-2014 2500/3500 SILVERADO/SIERRA

### MAXXCAM 3

SKU# SMX-MC3

- Adjustable Lift Height **1-2.5"**
- Shock Extensions included
- Differential relocation included
- Maintains factory ride quality
- Heat treated 4140 alloy steel
- Powder coated finish
- SMX-2011MT Torsion bar tool required
- Factory wheels or Positive offset wheel, Max tire size of (275/65/20) or (295/65/18) both equivalent to 34"



**SMX-MC3**  
\$299<sup>95</sup>



## 2001-2010 2500/3500 SILVERADO/SIERRA

## 1988-2000 Old-Body K2500/K3500 SILVERADO/SIERRA

### MAXXCAM 2 HD

SKU# SMX-MC2HD

- Adjustable Lift Height **1-2.5"**
- Heavy Duty shock bracket included
- Maintains factory Ride Quality
- Heat treated 4140 Alloy steel
- Powder Coated Finish
- Torsion bar tool required
- 285/75/16 or 33" equivalent on factory wheels or Positive offset wheel



**SMX-MC2HD**  
\$249<sup>99</sup>



### MAXXCAM 2

SKU# SMX-MC2

- Adjustable Lift Height **1-2"**
- Shock Extensions Included
- Maintains factory Ride Quality
- Heat treated 4140 Alloy steel
- Powder Coated Finish
- Torsion bar tool required
- 285/75/16 or 33" equivalent on factory wheels or positive offset wheel



**SMX-MC2**  
\$249<sup>99</sup>



## 2500/3500 SILVERADO/SIERRA ACCESSORIES

| Year Range | Make          | Model                                      | Lift Height | Tire Size | Price    | Part Number                 |
|------------|---------------|--|-------------|-----------|----------|-----------------------------|
| 2011-2018  | Chevrolet/GMC | 2500/3500 Silverado/Sierra w/ torsion bars | 2-3"        | -         | \$599.99 | <a href="#">SMX-11H2UCA</a> |

## 2500/3500 SILVERADO/SIERRA FRONT LEVELING KITS

| Year Range | Make          | Model   | Lift Height | Tire Size | Price    | Part Number               |
|------------|---------------|---|-------------|-----------|----------|---------------------------|
| 2017-2018  | Chevrolet/GMC | 2500/3500 Silverado/Sierra w/ torsion bars              | 1-2.5"      | 34"       | \$336.95 | <a href="#">SMX-MC7</a>   |
| 2015-2016  | Chevrolet/GMC | 2500/3500 Silverado/Sierra w/ torsion bars              | 1-2.5"      | 34"       | \$306.99 | <a href="#">SMX-MC5</a>   |
| 2011-2014  | Chevrolet/GMC | 2500/3500 Silverado/Sierra w/ torsion bars              | 1-2.5"      | 34"       | \$299.95 | <a href="#">SMX-MC3</a>   |
| 2001-2010  | Chevrolet/GMC | 1500HD/2500/3500 Silverado/Sierra w/ torsion bars       | 1-2.5"      | 33"       | \$249.99 | <a href="#">SMX-MC2HD</a> |
| 1988-2000  | Chevrolet/GMC | "Old-Body" K2500/K3500 Silverado/Sierra w/ torsion bars | 1-2"        | 33"       | \$249.99 | <a href="#">SMX-MC2</a>   |

## MAXXSTAK

SKU# SMX-GM725/GM725M

- Adjustable Lift Height 1.5- 2.5"
- Maintains factory ride quality
- Heat treated 4140 Alloy Steel
- Polyurethane high density lift spacers to dial in the correct lift height
- 275/60/20" or 33" equivalent on factory wheels or Positive offset wheel



**M** **2 HR** **33"**

|                     |                     |
|---------------------|---------------------|
| GM725               | GM725M              |
| \$159 <sup>95</sup> | \$169 <sup>95</sup> |

## MAXXSTAK

SKU# SMX-GM715/GM715M

- Lift Height 1.5"
- Maintains factory ride quality
- Heat treated 4140 Alloy Steel
- Grade 8 hardware
- Easy to Install



**E** **1 HR**

|                    |                    |
|--------------------|--------------------|
| GM715              | GM715M             |
| \$79 <sup>95</sup> | \$89 <sup>95</sup> |

## MAXXSTAK

SKU# SMX-GM710/GM710M

- Lift Height 1.0"
- Maintains factory ride quality
- Heat treated 4140 Alloy Steel
- Grade 8 hardware
- Easy to Install



**E** **1 HR**

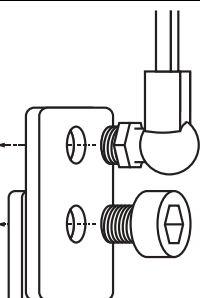
|                    |                    |
|--------------------|--------------------|
| GM710              | GM710M             |
| \$69 <sup>95</sup> | \$79 <sup>95</sup> |



### MAGNETIC-RIDE-CONTROL VEHICLES

SMX-GM725M/  
GM715M/GM710M

(M) models Include a bracket which compensates for increased lift height when connecting the Magnetic-Ride-Control sensor to the vehicle frame.



**1992-06 1500 SUV**  
**2002-06 AVALANCHE**

**2002-14 2500 SUBURBAN**  
**2002-06 AVALANCHE 2500**

## MAXXCAM 2

SKU# SMX-MC2

- Adjustable Lift Height 1-2.75"
- Shock Extensions Included
- Maintains factory Ride Quality
- Heat treated 4140 Alloy steel
- Powder Coated Finish
- Torsion bar tool required
- 285/75/16 or 33" equivalent on factory wheels or positive offset wheel



**M** **2.5 HR** **33"**

|                     |
|---------------------|
| SMX-MC2             |
| \$249 <sup>99</sup> |

## MAXXCAM 2 HD

SKU# SMX-MC2

- Adjustable Lift Height 1-2.5"
- Heavy Duty shock bracket included
- Maintains factory Ride Quality
- Heat treated 4140 Alloy steel
- Powder Coated Finish
- Torsion bar tool required
- 285/75/16 or 33" equivalent on factory wheels or Positive offset wheel



**M** **2.5 HR** **33"**

|                     |
|---------------------|
| SMX-MC2HD           |
| \$249 <sup>99</sup> |



# CHEVROLET • GMC

## 2002-2009 TRAILBLAZER

### MAXXSTAK

SKU# SMX-250XL

- Lift height 2.5"
- All Aluminum Constructions
- Require strut compressor for installation
- 255/65/17 or 30.7" equivalent on factory wheel or positive offset wheel



**SMX-250XL**  
**\$149<sup>95</sup>**

### MAXXSTAK

SKU# SMX-10125

- Lift height 1.75"
- All Aluminum Constructions
- Require strut compressor for installation
- 255/65/17 or 30.7" equivalent on factory wheel or positive offset wheel



**SMX-10125**  
**\$111<sup>50</sup>**

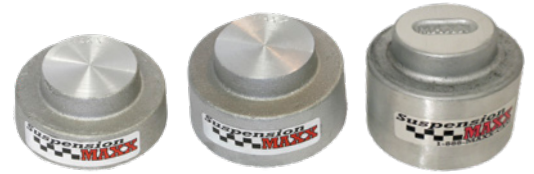
## CHEVROLET/GMC SUV

### MAXXSTAK REAR (COIL SPACERS)

SKU# SMX-15100/15150/15200/15100M/15150M

- Available in 1.0"/1.5"/2.0" lift Heights
- Cast Aluminum

**E 1 HR ALL MODELS**  
**\$84<sup>50</sup>**



## TAHOE/SUBURBAN/YUKON/TRAILBLAZER FRONT KITS

| Year Range | Make          | Model                              | Lift Height | Tire Size | Price    | Part Number                |
|------------|---------------|------------------------------------|-------------|-----------|----------|----------------------------|
| 2015-2018  | Chevrolet/GMC | Tahoe/Suburban/Yukon w/ MagneRide  | 1-2.5"      | 33"       | \$169.95 | <a href="#">SMX-GM725M</a> |
| 2015-2018  | Chevrolet/GMC | Tahoe/Suburban/Yukon w/ MagneRide  | 1.5"        | N/A"      | \$89.95  | <a href="#">SMX-GM715M</a> |
| 2015-2018  | Chevrolet/GMC | Tahoe/Suburban/Yukon w/ MagneRide  | 1"          | N/A"      | \$79.95  | <a href="#">SMX-GM710M</a> |
| 2007-2018  | Chevrolet/GMC | Tahoe/Suburban/Yukon               | 1-2.5"      | 33"       | \$159.95 | <a href="#">SMX-GM725</a>  |
| 2007-2018  | Chevrolet/GMC | Tahoe/Suburban/Yukon               | 1.5"        | N/A"      | \$79.95  | <a href="#">SMX-GM715</a>  |
| 2007-2018  | Chevrolet/GMC | Tahoe/Suburban/Yukon               | 1"          | N/A"      | \$69.95  | <a href="#">SMX-GM710</a>  |
| 2007-2013  | Chevrolet     | Avalanche                          | 1-2.5"      | 33"       | \$159.95 | <a href="#">SMX-GM725</a>  |
| 2007-2013  | Chevrolet     | Avalanche                          | 1.5"        | 33"       | \$79.95  | <a href="#">SMX-GM715</a>  |
| 2007-2013  | Chevrolet     | Avalanche                          | 1"          | 33"       | \$69.95  | <a href="#">SMX-GM715</a>  |
| 2002-2006  | Chevrolet     | Avalanche 1500                     | 1-2.5"      | 33"       | \$249.99 | <a href="#">SMX-MC2</a>    |
| 2002-2006  | Chevrolet     | Avalanche 2500                     | 1-2.5"      | 33"       | \$249.99 | <a href="#">SMX-MC2HD</a>  |
| 1992-2006  | Chevrolet/GMC | GM SUV w/ Torsion Bars             | 1-2.5"      | 33"       | \$249.99 | <a href="#">SMX-MC2</a>    |
| 2002-2014  | Chevrolet/GMC | Tahoe/Suburban/Yukon/Yukon XL 2500 | 1-2.5"      | 33"       | \$249.99 | <a href="#">SMX-MC2HD</a>  |
| 2002-2009  | Chevrolet/GMC | Trailblazer/Envoy                  | 2.5"        | 30.7"     | \$149.95 | <a href="#">SMX-250XL</a>  |
| 2002-2009  | Chevrolet/GMC | Trailblazer/Envoy                  | 1.75"       | 30.7"     | \$111.50 | <a href="#">SMX-10125</a>  |

## TAHOE/SUBURBAN/YUKON/TRAILBLAZER REAR KITS

| Year Range | Make          | Model  | Lift | Tire | Price   | Part Number                |
|------------|---------------|--|------|------|---------|----------------------------|
| 2002-2018  | Chevrolet/GMC | Tahoe/Suburban/TrailBlazer/Avalanche/Yukon/Yukon XL/Envoy w/ Coil            | 1"   | N/A" | \$84.50 | <a href="#">SMX-15100</a>  |
| 2002-2018  | Chevrolet/GMC | Tahoe/Suburban/TrailBlazer/Avalanche/Yukon/Yukon XL/Envoy w/ Coil            | 1.5" | N/A" | \$84.50 | <a href="#">SMX-15150</a>  |
| 2002-2018  | Chevrolet/GMC | Tahoe/Suburban/TrailBlazer/Avalanche/Yukon/Yukon XL/Envoy w/ Coil            | 2"   | N/A" | \$84.50 | <a href="#">SMX-15200</a>  |
| 2002-2018  | Chevrolet/GMC | Tahoe/Suburban/TrailBlazer/Avalanche/Yukon/Yukon XL/Envoy w/ Coil+ MagneRide | 1"   | N/A" | \$84.50 | <a href="#">SMX-15100M</a> |
| 2002-2018  | Chevrolet/GMC | Tahoe/Suburban/TrailBlazer/Avalanche/Yukon/Yukon XL/Envoy w/ Coil+ MagneRide | 1.5" | N/A" | \$84.50 | <a href="#">SMX-15150M</a> |

# CHEVROLET • GMC

## 2015-2018 COLORADO/CANYON

### MAXXSTAK

SKU# SMX-10195

- Lift height 1.75"
- CNC machined Cast aluminum spacer
- Maintains factory ride quality
- Includes differential relocation hardware
- 265/65/17 or equivalent on factory wheel or positive offset wheel.



SMX-10195

\$149<sup>95</sup>



## 2004-2012 COLORADO/CANYON (2WD)

### MAXXSTAK cc

SKU# SMX-10185X

- Adjustable Lift Height 2.0-2.5"
- Ball Joint Spacers and bump stop relocation brackets included
- Maintains factory Ride Quality
- CNC machined Cast aluminum spacer
- Polyurethane high density lift spacers to dial in the correct lift height
- 265/70/17 or 31.5" equivalent on factory wheels or Positive offset wheel



SMX-10185X

\$249<sup>95</sup>





### MAXXCAM JR

SKU# SMX-MCJRC

- Adjustable Lift Height 1-3.0"
- Shock Extensions and bump stops included
- Includes differential relocation hardware
- Maintains factory Ride Quality
- Heat treated 4140 Alloy steel
- Powder Coated Finish
- 265/75/16 or 32" equivalent on factory wheels or Positive offset wheel
- No Torsion Tool Required



SMX-MCJRC

\$264<sup>95</sup>



### COLORADO/CANYON FRONT LEVELING KITS

| Year Range | Make          | Model  | Lift Height | Tire Size | Price    | Part Number                |
|------------|---------------|--|-------------|-----------|----------|----------------------------|
| 2015-2018  | Chevrolet/GMC | Colorado/Canyon 2WD/4WD                      | 2.5"        | 32"       | \$149.95 | <a href="#">SMX-10195</a>  |
| 2004-2012  | Chevrolet/GMC | Colorado/Canyon 2WD Z71 / 4WD                | 1-3"        | 32"       | \$264.95 | <a href="#">SMX-MCJRC</a>  |
| 2004-2012  | Chevrolet/GMC | Colorado/Canyon 2WD coil on strut suspension | 2.5"        | 31"       | \$249.95 | <a href="#">SMX-10185X</a> |

# CHEVROLET • GMC

## 2004-2012 COLORADO/CANYON (All Models)

### MAXXSHACKLE

SKU# SMX-15400 / 15408

- Adjustable lift Height 1.0-1.5-2.0"
- ¼" plate steel, robotically plasma cut
- CNC formed for precision
- Industrial Coating



**SMX-15400** **SMX-15408**  
**\$129<sup>95</sup>** **\$129<sup>95</sup>**



### COLORADO/CANYON REAR LEVELING KITS

| Year Range | Make          | Model           | Lift Height | Tire Size | Price    | Part Number               |
|------------|---------------|-----------------|-------------|-----------|----------|---------------------------|
| 2009-2012  | Chevrolet/GMC | Colorado/Canyon | 1-2"        | N/A       | \$129.95 | <a href="#">SMX-15408</a> |
| 2004-2008  | Chevrolet/GMC | Colorado/Canyon | 1-2"        | N/A       | \$129.95 | <a href="#">SMX-15400</a> |

## 1988-2004 S-10

### MAXXCAM RS

SKU# SMX-MCS10

- Adjustable Lift Height 1.0-2.5"
- Maintains factory Ride Quality
- Heat treated 4140 Alloy steel
- Powder Coated Finish
- Torsion bar tool required
- 265/75/16 or 31.5" equivalent on factory wheels or Positive offset wheel



**SMX-MCS10**  
**\$179<sup>95</sup>**



### S-10 FRONT LEVELING KITS

| Year Range | Make          | Model                             | Lift Height | Tire Size | Price    | Part Number               |
|------------|---------------|-----------------------------------|-------------|-----------|----------|---------------------------|
| 1988-2004  | Chevrolet/GMC | S-10/S-15/Jimmy/Blazer/ZR2 models | 1-2.5"      | 31.5"     | \$179.95 | <a href="#">SMX-MCS10</a> |

# HUMMER

## 2006-2010 HUMMER H3

### MAXXCAM JR

SKU# SMX-MCJRH

- Adjustable Lift Height 1-3.0"
- Shock Extensions included
- Includes differential relocation hardware
- Maintains factory Ride Quality
- Heat treated 4140 Alloy steel
- Powder Coated Finish
- 35" equivalent on factory wheels or Positive offset wheel



**M** **2.5** **35"**

**SMX-MCJRH**  
**\$264<sup>95</sup>**

### LIFT SHACKLES

SKU# SMX-15400H

- Rear lift Height 1.0"
- 1/4" plate steel, robotically plasma cut
- CNC formed for precision
- Industrial Coating



**M** **2** **HR**

**SMX-15400H**  
**\$129<sup>95</sup>**

## 2003-2010 HUMMER H2

### MAXXCAM 2 HD

SKU# SMX-MC2

- Adjustable Lift Height 1-2.5"
- Heavy Duty shock bracket included
- Maintains factory Ride Quality
- Heat treated 4140 Alloy steel
- Powder Coated Finish
- Torsion bar tool required
- 285/75/16 or 33" equivalent on factory wheels or Positive offset wheel



**M** **2.5** **37"**

**SMX-MC2HD**  
**\$249<sup>99</sup>**

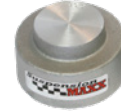
### MAXXSTAK REAR

SKU# SMX-15100 / 15150 / 15200

- Available in 1.0"/1.5"/2.0" lift Heights
- Cast Aluminum

**E** **1** **HR**

**SMX-15100** **SMX-15150** **SMX-15200**  
**\$84<sup>50</sup>** **\$84<sup>50</sup>** **\$84<sup>50</sup>**



## HUMMER FRONT LEVELING KITS

| Year Range | Make   | Model              | Lift Height | Tire Size | Price    | Part Number               |
|------------|--------|--------------------|-------------|-----------|----------|---------------------------|
| 2006-2010  | Hummer | H3 w/ torsion bars | 1-3"        | 35"       | \$264.95 | <a href="#">SMX-MCJRH</a> |
| 2003-2010  | Hummer | H2                 | 1-2.5"      | 37"       | \$249.99 | <a href="#">SMX-MC2HD</a> |

## HUMMER REAR LEVELING KITS

| Year Range | Make   | Model                   | Lift Height | Tire Size | Price    | Part Number                |
|------------|--------|-------------------------|-------------|-----------|----------|----------------------------|
| 2006-2010  | Hummer | H3                      | 1"          | N/A"      | \$129.95 | <a href="#">SMX-15400H</a> |
| 2003-2010  | Hummer | H2 w/ rear coil springs | 1"          | N/A       | \$84.50  | <a href="#">SMX-15100</a>  |
| 2003-2010  | Hummer | H2 w/ rear coil springs | 1.5"        | N/A       | \$84.50  | <a href="#">SMX-15150</a>  |
| 2003-2010  | Hummer | H2 w/ rear coil springs | 2"          | N/A       | \$84.50  | <a href="#">SMX-15200</a>  |

# DODGE • RAM

## SWAY BAR END LINKS

### MAXXLINKS

MAXXLink Heavy Duty Sway Bar End Links were developed by the innovators at SuspensionMAXX as an extremely durable, cost efficient and long lasting solution for quick wearing OEM end links. MAXXLinks are available in original and extended lengths whether your vehicle is stock or lifted.

**E 1**  
**HR**

STARTING AT  
**\$94<sup>50</sup>**



**BOMB PROOF  
LIFTED END LINKS**  
(For Select Lifted Models)

**NEW  
FOR 2018**

## 2009-2018 RAM 1500 4x4 (INCLUDES ECODIESEL)

### MAXXSTAK FRONT

SKU# SMX-RM610

- Lift Height 2-3"
- Maintains factory Ride Quality
- CNC machined Cast aluminum spacer
- Polyurethane high density lift spacers to dial in the correct lift height
- Require strut compressor for installation at the maximum lift of 3"
- 275/70/18 or 33" equivalent on factory wheel or positive offset wheel

**M 2.5**  
**HR 33"**

**SMX-RM610**  
**\$239<sup>95</sup>**



### MAXXSTAK REAR

SKU# SMX-17150

- Available in 1.5"
- Cast Aluminum
- Requires drilling

**M 1**  
**HR**

**SMX-17150**  
**\$84<sup>50</sup>**



### MAXXSTAK REAR

SKU# SMX-17200

- Available in 2.0"
- Cast Aluminum
- Requires drilling

**M 1**  
**HR**

**SMX-17200**  
**\$84<sup>50</sup>**



## 2006-2008 RAM 1500 4x4

### MAXXSTAK FRONT

SKU# SMX-RM6

- Lift Height 2-2.5"
- Maintains factory Ride Quality
- CNC machined Cast aluminum spacer
- Polyurethane high density lift spacers to dial in the correct lift height
- 275/70/18 or 33" equivalent on factory wheel or positive offset wheel

**M 2.5**  
**HR 33"**

**SMX-RM6**  
**\$189<sup>50</sup>**



### RAMcam

SKU# SMX-RMC

- Adjustable Lift Height 1-2.5"
- Maintains factory ride quality
- Heat treated 4140 Alloy steel
- Powder coated finish
- Torsion bar tool required
- 285/75/16 or 33" equivalent on factory wheels or positive offset wheel



SMX-RMC

\$249<sup>95</sup>



## 1994-2001 RAM 1500 4x4

### MAXXstak FRONT

SKU# SMX-10200

- Lift Heights 2"
- Maintains factory ride quality
- CNC machined Cast aluminum coil spring spacer
- Heavy Duty shock bracket included
- Install time: 2 hours
- 285/75/16 or 33" equivalent on factory wheels or Positive offset wheel



SMX-10200

\$229<sup>95</sup>



### MAXXstak FRONT

SKU# SMX-10230

- Lift Heights 3"
- Maintains factory ride quality
- CNC machined Cast aluminum coil spring spacer
- Heavy Duty shock bracket included
- Install time: 2 hours
- 285/75/16 or 33" equivalent on factory wheels or Positive offset wheel



SMX-10200

\$239<sup>95</sup>



## RAM FRONT LEVELING KITS

| Year Range | Make  | Model                        | Lift Height | Tire Size | Price    | Part Number               |
|------------|-------|------------------------------|-------------|-----------|----------|---------------------------|
| 2009-2018  | Dodge | Ram 1500 4x4 (non-Mega-Cab)  | 3"          | 33"       | \$239.95 | <a href="#">SMX-RM610</a> |
| 2006-2008  | Dodge | Ram 1500 4x4 (non-Mega-Cab)  | 2.5"        | 33"       | \$189.50 | <a href="#">SMX-RM6</a>   |
| 2002-2005  | Dodge | Ram 1500 4x4 w/ torsion bars | 1-2"        | 33"       | \$249.95 | <a href="#">SMX-RMC</a>   |
| 1994-2001  | Dodge | Ram 4x4 1500                 | 2"          | 33"       | \$229.95 | <a href="#">SMX-10200</a> |
| 1994-2001  | Dodge | Ram 4x4 1500                 | 3"          | 33"       | \$239.95 | <a href="#">SMX-10230</a> |

## RAM REAR LEVELING KITS

| Year Range | Make  | Model                | Lift Height | Tire Size | Price   | Part Number               |
|------------|-------|----------------------|-------------|-----------|---------|---------------------------|
| 2009-2018  | Dodge | Ram 1500 2wd and 4x4 | 1.5"        | N/A       | \$84.50 | <a href="#">SMX-17150</a> |
| 2009-2018  | Dodge | Ram 1500 2wd and 4x4 | 2"          | N/A       | \$84.50 | <a href="#">SMX-17200</a> |

## 2014-2018 RAM 2500 / 2013.5-2016 RAM 3500 4X4

### MAXXSTAK FRONT

SKU# SMX-10214

- Lift Heights 2.5"
- Maintains factory ride quality
- CNC machined Cast aluminum coil spring spacer
- Shock relocation spacer included
- Install time: 2 hours
- 285/75/16 or 35" equivalent on factory wheels or Positive offset wheel



SMX-10214

\$249<sup>95</sup>



## 1994-2013 RAM 2500 / 1994-2013.5 RAM 3500 4X4

### MAXXSTAK FRONT

SKU# SMX-10200

- Lift Heights 2"
- Maintains factory ride quality
- CNC machined Cast aluminum coil spring spacer
- Heavy Duty shock bracket included
- Install time: 2 hours
- 285/75/16 or 33" equivalent on factory wheels or Positive offset wheel



SMX-10200

\$229<sup>95</sup>



### MAXXSTAK FRONT

SKU# SMX-10230

- Lift Heights 3"
- Maintains factory ride quality
- CNC machined Cast aluminum coil spring spacer
- Heavy Duty shock bracket included
- Install time: 2 hours
- 285/75/16 or 33" equivalent on factory wheels or Positive offset wheel



SMX-10230

\$239<sup>95</sup>



## RAM 2500/3500 FRONT LEVELING KITS

| Year Range               | Make  | Model   | Lift Height | Tire Size | Price    | Part Number               |
|--------------------------|-------|---|-------------|-----------|----------|---------------------------|
| 2014-2018<br>2013.5-2018 | Dodge | 2014-2018 Ram 2500 / 2013.5-2016 Ram 3500 4x4 | 2.5"        | 35"       | \$249.95 | <a href="#">SMX-10214</a> |
| 1994-2013<br>1994-2013.5 | Dodge | 1994-2013 Ram 2500 / 1994-2013.5 Ram 3500 4x4 | 2"          | 33"       | \$229.95 | <a href="#">SMX-10200</a> |
| 1994-2013<br>1994-2013.5 | Dodge | 1994-2013 Ram 2500 / 1994-2013.5 Ram 3500 4x4 | 3"          | 33"       | \$239.95 | <a href="#">SMX-10230</a> |



### MAXXSTAK FRONT

SKU# SMX-DAK4

- Lift Height 2-2.5"
- Maintains factory Ride Quality
- CNC machined Cast aluminum spacer
- Polyurethane high density lift spacers to dial in the correct lift height
- 265/75/16 or 32" equivalent on factory wheels or Positive offset wheel

**M** **2.5** **HR** **32"** **SMX-DAK4**  
\$189<sup>50</sup>



## 1997-2004 DAKOTA / 1998-2003 DURANGO

### DAKOTACAM

SKU# SMX-RMCJR

- Adjustable Lift Height 1-2.5"
- Shock Extensions included
- Maintains factory Ride Quality
- Heat treated 4140 Alloy steel
- Powder Coated Finish
- Torsion bar tool required
- 265/75/16 or 32" equivalent on factory wheels or Positive offset wheel

**M** **2.5** **HR** **32"** **SMX-RMCJR**  
\$249<sup>95</sup>



## 2004-2010 DURANGO

### DURANGOCAM

SKU# SMX-DC5

- Adjustable Lift Height 1-2.5"
- Maintains factory Ride Quality
- Heat treated 4140 Alloy steel
- Powder Coated Finish
- Torsion bar tool required
- 265/75/16 or 32" equivalent on factory wheels or positive offset wheel

**M** **2** **HR** **32"** **SMX-DC5**  
\$249<sup>95</sup>



### DAKOTA/DURANGO FRONT LEVELING KITS

| Year Range | Make           | Model                         | Lift Height | Tire Size | Price    | Part Number               |
|------------|----------------|-------------------------------|-------------|-----------|----------|---------------------------|
| 2004-2010  | Dodge          | Dakota                        | 2-2.5"      | 32"       | \$189.50 | <a href="#">SMX-DAK4</a>  |
| 1997-2004  | Dodge          | Dakota w/ torsion bars        | 1-2.5"      | 32"       | \$249.95 | <a href="#">SMX-RMCJR</a> |
| 2004-2010  | Dodge/Chrysler | Durango/Aspen w/ torsion bars | 1-2.5"      | 32"       | \$249.95 | <a href="#">SMX-DC5</a>   |

# FORD

## 2014-2018 F150 2wd/4x4



### MAXXSTAK FRONT

SKU# SMX-FD6

- Lift Height 2-2.5"
- Maintains factory Ride Quality
- CNC machined Cast aluminum spacer
- Polyurethane high density lift spacers to dial in the correct lift height
- 275/70/18 or 33" equivalent on factory wheel or positive offset wheel



SMX-FD6

\$209<sup>95</sup>



### MAXXSTAK FRONT

SKU# SMX-FD4

- Lift Height 2-2.5"
- Maintains factory Ride Quality
- CNC machined Cast aluminum spacer
- Polyurethane high density lift spacers to dial in the correct lift height
- 275/70/18 or 33" equivalent on factory wheel or positive offset wheel



SMX-FD4

\$219<sup>95</sup>



### FXCAM

SKU# SMX-FXC

- Adjustable Lift Height 1.0-2.5"
- Maintains factory ride quality
- Heat treated 4140 Alloy steel
- Powder coated finish
- Torsion bar tool required
- 285/75/16 or 33" equivalent on factory wheels or Positive offset wheel



SMX-FXC

\$199<sup>95</sup>



### F-150 FRONT LEVELING KITS

| Year Range | Make | Model  | Lift Height | Tire Size | Price    | Part Number             |
|------------|------|--|-------------|-----------|----------|-------------------------|
| 2014-2018  | Ford | F-150 w/ Coil over struts  | 2-2.5"      | 33"       | \$209.95 | <a href="#">SMX-FD6</a> |
| 2004-2013  | Ford | F-150 w/ Coil over struts  | 2-2.5"      | 33"       | \$219.95 | <a href="#">SMX-FD4</a> |
| 1997-2004  | Ford | F-150 4x4 Includes (2004 Heritage) / 1997-02 Expedition with torsion bars (1998-1999) F-250 Light Duty 7 Lug | 1-2.5"      | 33"       | \$199.95 | <a href="#">SMX-FXC</a> |

### MAXXSTAK SD FRONT

SKU# SMX-10330

- Lift Height 1.0"
- Shock extension included
- Solid Steel Construction
- Mounts underneath Coil Spring perch

**M** **2** HR **35"**

SMX-10330

**\$119<sup>95</sup>**



### MAXXSTAK SD FRONT

SKU# SMX-10340

- Lift Height 1.5"
- Shock extension included
- Solid Steel Construction
- Mounts underneath Coil Spring perch

**M** **2** HR **35"**

SMX-10340

**\$119<sup>95</sup>**



## 2005-2012 F-250/350 SUPER DUTY

### MAXXSTAK SD

SKU# SMX-10350

- Lift Height 2.5"
- CNC machined Cast aluminum coil spring spacer
- Shock extensions included
- Maintains factory ride quality
- 35" tires on factory wheels or Positive offset wheel



SMX-10350

**\$179<sup>95</sup>**



### F-250/F-350 FRONT LEVELING KITS

| Year Range | Make | Model                      | Lift Height | Tire Size | Price    | Part Number               |
|------------|------|----------------------------|-------------|-----------|----------|---------------------------|
| 2005-2016  | Ford | F-250/F-350 Super Duty 4x4 | 1"          | 35"       | \$119.95 | <a href="#">SMX-10330</a> |
| 2005-2016  | Ford | F-250/F-350 Super Duty 4x4 | 1.5"        | 35"       | \$119.95 | <a href="#">SMX-10340</a> |
| 2005-2012  | Ford | F-250/F-350 Super Duty 4x4 | 2.5"        | 35"       | \$179.95 | <a href="#">SMX-10350</a> |

## 1995-2000 RANGER

### MAXXCAM RS

SKU# SMX-MCR

- Adjustable Lift Height 1.0-2.5"
- Maintains factory Ride Quality
- Heat treated 4140 Alloy steel
- Powder Coated Finish
- Torsion bar tool required
- 265/75/16 or 31.5" equivalent on factory wheels or Positive offset wheel



SMX-MCR

**\$179<sup>95</sup>**



### FORD FRONT LEVELING KITS

| Year Range | Make | Model   | Lift Height | Tire Size | Price    | Part Number             |
|------------|------|---|-------------|-----------|----------|-------------------------|
| 1995-2000  | Ford | 1995-2000 Explorer Sport Trac 1997-2013 Ranger 4x4 & 2wd + Torsion bars | 1-2.5"      | 32"       | \$179.95 | <a href="#">SMX-MCR</a> |

# TOYOTA

## 2007-2018 TUNDRA

### MAXXSTAK

SKU# SMX-TD720

- Adjustable Lift Height 2.0"
- Maintains factory Ride Quality
- CNC machined Cast aluminum spacer
- Polyurethane high density lift spacers to dial in the correct lift height
- Differential relocation hardware included
- 275/70/18 or 33" equivalent on factory wheels or Positive offset wheel

**M** **2.5** **HR** **33"** **SMX-TD720**  
\$229<sup>95</sup>



### MAXXSTAK

SKU# SMX-TD725

- Adjustable Lift Height 2.5"
- Maintains factory Ride Quality
- CNC machined Cast aluminum spacer
- Polyurethane high density lift spacers to dial in the correct lift height
- Differential relocation hardware included
- 275/70/18 or 33" equivalent on factory wheels or Positive offset wheel

**M** **2.5** **HR** **33"** **SMX-TD725**  
\$229<sup>95</sup>

### MAXXSTAK

SKU# SMX-TD730

- Adjustable Lift Height 3.0"
- Maintains factory Ride Quality
- CNC machined Cast aluminum spacer
- Polyurethane high density lift spacers to dial in the correct lift height
- Differential relocation hardware included
- 275/70/18 or 33" equivalent on factory wheels or Positive offset wheel

**M** **2.5** **HR** **33"** **SMX-TD730**  
\$229<sup>95</sup>

## 2001-2006 TUNDRA

### MAXXSTAK

SKU# SMX-TD425

- Adjustable Lift Height 2.0-2.5"
- Maintains factory Ride Quality
- CNC machined Cast aluminum spacer
- Polyurethane high density lift spacers to dial in the correct lift height
- Differential relocation hardware included
- 275/65/18 or 32" equivalent on factory wheels or Positive offset wheel

**M** **2.5** **HR** **32"**

**SMX-TD425**  
\$219<sup>95</sup>



### TUNDRA FRONT LEVELING KITS

| Year Range | Make   | Model  | Lift Height | Tire Size | Price    | Part Number               |
|------------|--------|--------|-------------|-----------|----------|---------------------------|
| 2007-2018  | Toyota | Tundra | 2"          | 33"       | \$229.95 | <a href="#">SMX-TD720</a> |
| 2007-2018  | Toyota | Tundra | 2.5"        | 33"       | \$229.95 | <a href="#">SMX-TD725</a> |
| 2007-2018  | Toyota | Tundra | 3"          | 33"       | \$229.95 | <a href="#">SMX-TD730</a> |
| 2001-2006  | Toyota | Tundra | 2-2.5"      | 32"       | \$219.95 | <a href="#">SMX-TD425</a> |

## 2005-2018 TACOMA / 2007-2010 FJ CRUISER

### MAXXSTAK

SKU# SMX-TC5 / SMX-FJ7

- Adjustable Lift Height 2.0-2.5"
- Maintains factory Ride Quality
- CNC machined Cast aluminum spacer
- Polyurethane high density lift spacers to dial in the correct lift height
- Differential relocation hardware included
- 265/75/ 16 or 31.6" equivalent on factory wheels or Positive offset wheel



**SMX-TC5** **SMX-FJ7**  
**\$219<sup>95</sup>** **\$242<sup>95</sup>**



## 1995-2004 TACOMA

### MAXXSTAK

SKU# SMX-9504

- Adjustable Lift Height 2.0-2.5"
- Maintains factory Ride Quality
- CNC machined Cast aluminum spacer
- Polyurethane high density lift spacers to dial in the correct lift height
- Differential relocation hardware included
- 265/75/ 16 or 31.6" equivalent on factory wheels or Positive offset wheel



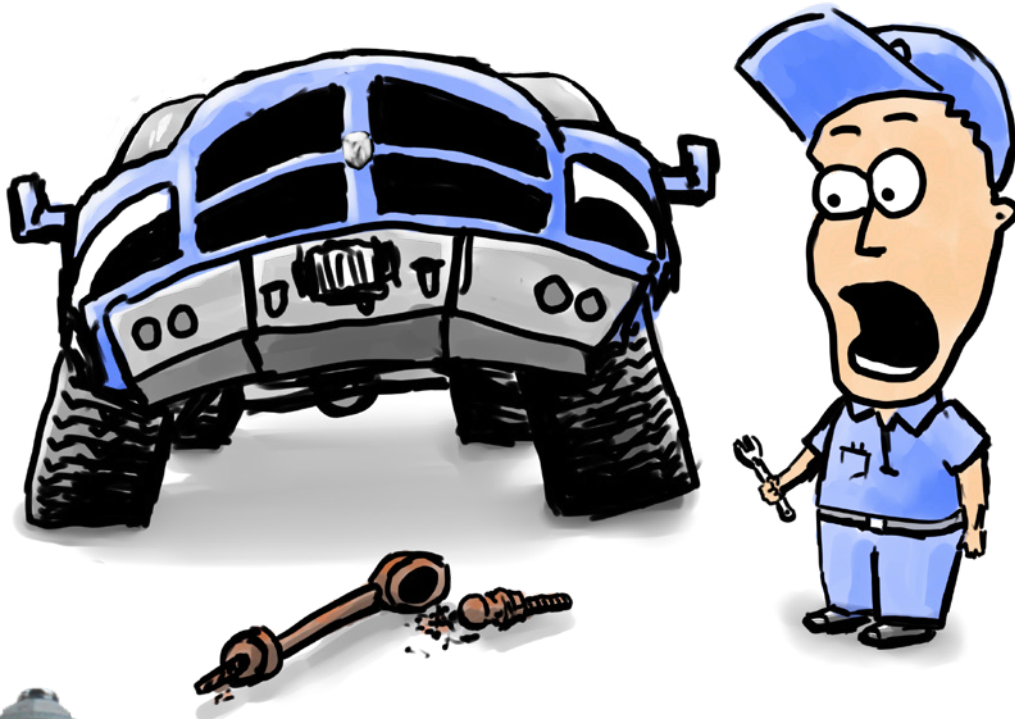
**SMX-9504**  
**\$219<sup>95</sup>**



### TACOMA/FJ CRUISER FRONT LEVELING KITS

| Year Range | Make   | Model          | Lift Height | Tire Size | Price    | Part Number              |
|------------|--------|----------------|-------------|-----------|----------|--------------------------|
| 2005-2018  | Toyota | Tacoma         | 2-2.5"      | 31.6"     | \$219.95 | <a href="#">SMX-TC5</a>  |
| 1995-2004  | Toyota | Tacoma         | 2-2.5"      | 31.6"     | \$219.95 | <a href="#">SMX-9504</a> |
| 2007-2010  | Toyota | FJ Cruiser 4x4 | 2-2.5"      | 33"       | \$242.95 | <a href="#">SMX-FJ7</a>  |

## SWAY BAR LINKS BAD AGAIN?



## THE SOLUTION!

### MAXXLinks

- Replaces wear prone stock ball socket with a long-lasting, simple robust design
- Polyurethane bushings fit better and perform longer than original equipment
- Patented bushing design to allow articulation of the sway bar
- Extended lengths for Leveled and Lifted trucks/ SUVs
- Stainless steel washers and Grade 8 hardware
- 4140 heat treated steel end link
- No drill, direct bolt in





## FAQ and how to order links for your truck!

**Q:** How do I measure my sway bar links on my lifted truck?

**A:** Measure the sway bar end link from the center line of the lower mounting point to the centerline of the upper mounting point. Our links are built to the specific center to center measurements.

**Q:** I have the center to center measurement but what part number do I need to order.

**A:** First select the link style you need based on your year make and model. Then add the desired measurement to the end of the part number.

For example if you need a 8-1/2 " sway bar end link for your 2006 Dodge Ram 2500. The link style would be SMX-1226. The 8.5" version would be SMX-122685 or for a 8" version SMX-122680.

For sway bar links greater than 8.5" please call and we can build you a sway bar link for your RAM up to 12" Center to Center! Depending on your model

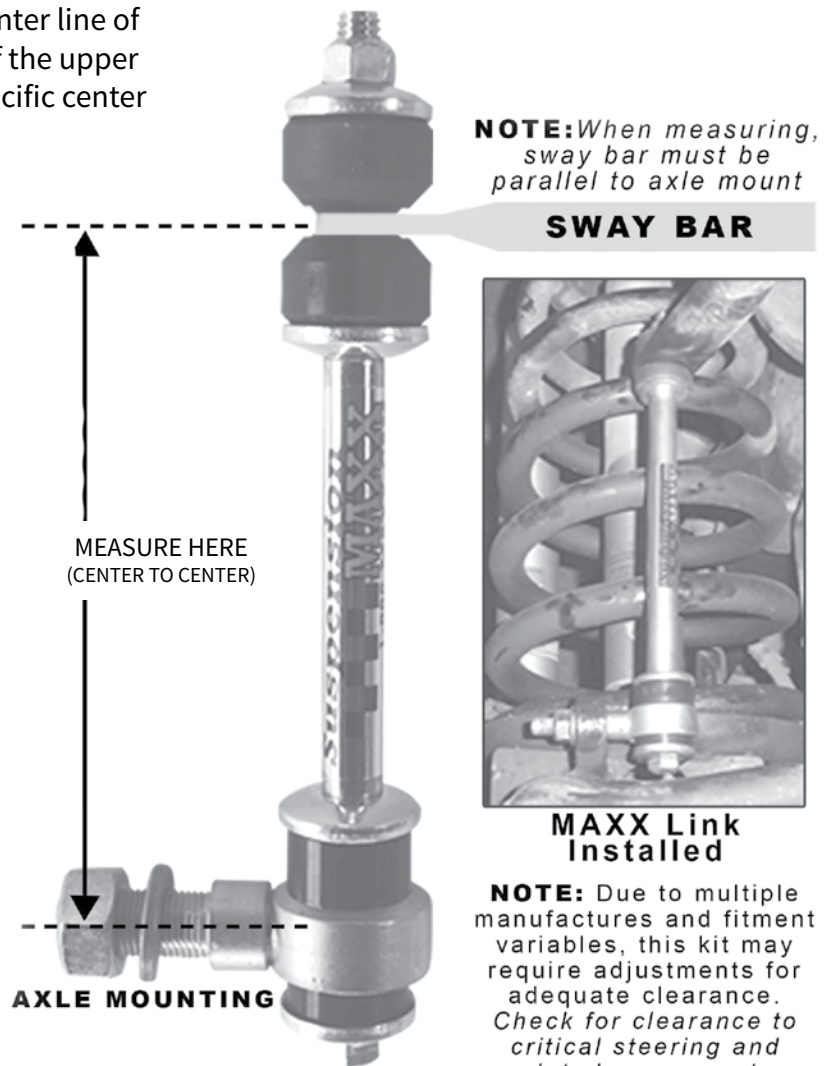
Please verify the style of end link you need for your truck. Dodge has changed the sway bar links in some cases every two years and we have done our best to narrow the sway bar links down to the exact year make and model.

**Q:** I have a 4 inch lifted ram and it has stock end links, how could this be?

**A:** Lift kits often come with screw on extensions for your sway bar links or they use a drop bracket for the frame that allows you to keep the OE sway bar links.

**Q:** What about the Heim joint sway bar links?

**A:** We experienced and had customers try the heim joint style end links and at first they are great. As the heim joints wear over time they end up loose and noisy. No longer capable of keeping the sway bar firmly mounted to the axle.





STARTING AT  
**\$94<sup>50</sup>**  
SOLD IN PAIRS

### END LINK TYPES

NO DRILL, DIRECT BOLT ON FIT



\*Please measure your sway bar links originally supplied with your lift kit. The following sway bar link lift recommendations are only to be used as guidelines.

## RAM/DODGE SWAY BAR END LINKS

### 2006-2018 RAM 1500 4x4 w/ IFS

#### Stock

SKU# SMX-1300  
Length: **7.5"** \*(Ctr to Ctr)  
**\$139<sup>50</sup>**

#### Leveled

SKU# SMX-1300L  
Length: **8.5"** \*(Ctr to Ctr)  
**\$149<sup>50</sup>**

#### Lifted

SKU# SMX-1300xx  
Length: **Custom Length for lifted applications**

### 2000-2001 RAM 1500 4x4

#### Stock

SKU# SMX-1225  
12MM Stud with taper  
Length: **4.5"** \*(Ctr to Ctr)  
**\$94<sup>50</sup>**

#### Leveled

SKU# SMX-1225L  
12MM Stud with taper  
Length: **5.5"** \*(Ctr to Ctr)  
**\$99<sup>50</sup>**

#### Lifted 12MM Stud With Taper

|                         |                           |            |                 |
|-------------------------|---------------------------|------------|-----------------|
|                         | <b>6"</b> *(Ctr to Ctr)   | SMX-122560 | <b>\$99.95</b>  |
|                         | <b>6.5"</b> *(Ctr to Ctr) | SMX-122565 | <b>\$99.95</b>  |
|                         | <b>7"</b> *(Ctr to Ctr)   | SMX-122570 | <b>\$99.95</b>  |
|                         | <b>7.5"</b> *(Ctr to Ctr) | SMX-122575 | <b>\$99.95</b>  |
| <b>4" Lift (Approx)</b> | <b>8"</b> *(Ctr to Ctr)   | SMX-122580 | <b>\$149.95</b> |
| <b>5" Lift (Approx)</b> | <b>9"</b> *(Ctr to Ctr)   | SMX-122590 | <b>\$149.95</b> |
| <b>6" Lift (Approx)</b> | <b>10"</b> *(Ctr to Ctr)  | SMX-122510 | <b>\$149.95</b> |
| <b>7" Lift (Approx)</b> | <b>11"</b> *(Ctr to Ctr)  | SMX-122511 | <b>\$149.95</b> |

### April 1995-1999 RAM 1500 4x4

#### Stock

SKU# SMX-1223  
12MM Stud slight taper  
Length: **3.5"** \*(Ctr to Ctr)  
**\$94<sup>50</sup>**

#### Leveled

SKU# SMX-1223L  
12MM Stud slight taper  
Length: **4.5"** \*(Ctr to Ctr)  
**\$99<sup>50</sup>**

#### Lifted 12MM Stud Slight Taper

|                         |                           |            |                 |
|-------------------------|---------------------------|------------|-----------------|
|                         | <b>5"</b> *(Ctr to Ctr)   | SMX-122350 | <b>\$99.50</b>  |
|                         | <b>5.5"</b> *(Ctr to Ctr) | SMX-122355 | <b>\$99.50</b>  |
|                         | <b>6"</b> *(Ctr to Ctr)   | SMX-122360 | <b>\$99.50</b>  |
|                         | <b>6.5"</b> *(Ctr to Ctr) | SMX-122365 | <b>\$99.50</b>  |
|                         | <b>7"</b> *(Ctr to Ctr)   | SMX-122370 | <b>\$99.50</b>  |
|                         | <b>7.5"</b> *(Ctr to Ctr) | SMX-122375 | <b>\$99.50</b>  |
| <b>4" Lift (Approx)</b> | <b>8"</b> *(Ctr to Ctr)   | SMX-122380 | <b>\$149.95</b> |
| <b>5" Lift (Approx)</b> | <b>9"</b> *(Ctr to Ctr)   | SMX-122390 | <b>\$149.95</b> |
| <b>6" Lift (Approx)</b> | <b>10"</b> *(Ctr to Ctr)  | SMX-122310 | <b>\$149.95</b> |
| <b>7" Lift (Approx)</b> | <b>11"</b> *(Ctr to Ctr)  | SMX-122311 | <b>\$149.95</b> |

# MAXXLINKS

## 1994-March 1995 RAM 1500 4x4

### Stock

SKU# SMX-1222  
12MM Short Stud  
Length: **3.5"** \*(Ctr to Ctr)  
**\$94<sup>50</sup>**

### Leveled

SKU# SMX-1222i  
12MM Stud slight taper  
Length: **3.0"** \*(Ctr to Ctr)  
**\$94<sup>50</sup>**

**\*NOTICE:** Early Ram models have inverted sway bar links. Longer sway bar links will not work with the inverted tower design. Shorter sway bar links required for leveled trucks

## 2014-2018 RAM 2500 4x4 | 2013.5-2016 RAM 3500 4x4

### Stock

SKU# SMX-1315  
9/16" Stud  
Length: **5.5"** \*(Ctr to Ctr)  
**\$149<sup>95</sup>**

### Leveled

SKU# SMX-1315L  
9/16" Stud  
Length: **6.5"** \*(Ctr to Ctr)  
**\$149<sup>95</sup>**

### Lifted 12MM Stud With Taper

|                    |            |                 |
|--------------------|------------|-----------------|
| 7" *(Ctr to Ctr)   | SMX-122570 | <b>\$149.95</b> |
| 7.5" *(Ctr to Ctr) | SMX-122575 | <b>\$149.95</b> |

## 2011-2013 RAM 2500/3500 4x4

### Stock

SKU# SMX-1311  
9/16" Stud  
Length: **5.5"** \*(Ctr to Ctr)  
**\$94<sup>50</sup>**

### Leveled

SKU# SMX-1311L  
9/16" Stud  
Length: **6.5"** \*(Ctr to Ctr)  
**\$99<sup>50</sup>**

### Lifted 9/6" Stud

|                    |                              |                 |
|--------------------|------------------------------|-----------------|
| 7" *(Ctr to Ctr)   | SMX-131170                   | <b>\$99.50</b>  |
| 7.5" *(Ctr to Ctr) | SMX-131175                   | <b>\$99.50</b>  |
| 4" Lift (Approx)   | 8" *(Ctr to Ctr) SMX-131180  | <b>\$99.50</b>  |
| 5" Lift (Approx)   | 9" *(Ctr to Ctr) SMX-131190  | <b>\$149.95</b> |
| 6" Lift (Approx)   | 10" *(Ctr to Ctr) SMX-131110 | <b>\$149.95</b> |
| 7" Lift (Approx)   | 11" *(Ctr to Ctr) SMX-131111 | <b>\$149.95</b> |

## 2006-2010 RAM 1500 Mega Cab/2500/3500 4x4

### Stock

SKU# SMX-1227  
9/16" Stud  
Length: **4.5"** \*(Ctr to Ctr)  
**\$94<sup>50</sup>**

### Leveled

SKU# SMX-1227L  
9/16" Stud  
Length: **5.5"** \*(Ctr to Ctr)  
**\$99<sup>50</sup>**

### Lifted 9/6" Stud

|                    |                              |                 |
|--------------------|------------------------------|-----------------|
| 6" *(Ctr to Ctr)   | SMX-122760                   | <b>\$99.50</b>  |
| 6.5" *(Ctr to Ctr) | SMX-122765                   | <b>\$99.50</b>  |
| 7" *(Ctr to Ctr)   | SMX-122770                   | <b>\$99.50</b>  |
| 7.5" *(Ctr to Ctr) | SMX-122775                   | <b>\$99.50</b>  |
| 4" Lift (Approx)   | 8" *(Ctr to Ctr) SMX-122780  | <b>\$149.95</b> |
| 5" Lift (Approx)   | 9" *(Ctr to Ctr) SMX-122790  | <b>\$149.95</b> |
| 6" Lift (Approx)   | 10" *(Ctr to Ctr) SMX-122710 | <b>\$149.95</b> |
| 7" Lift (Approx)   | 11" *(Ctr to Ctr) SMX-122711 | <b>\$149.95</b> |

## 2003-2005 RAM 2500/3500 4x4

### Stock

SKU# SMX-1226  
10MM stud with taper  
Length: **4.5"** \*(Ctr to Ctr)  
**\$94<sup>50</sup>**

### Leveled

SKU# SMX-1226L  
10MM stud with taper  
Length: **5.5"** \*(Ctr to Ctr)  
**\$99<sup>50</sup>**

### Lifted 10MM Stud With Taper

|                    |                              |                 |
|--------------------|------------------------------|-----------------|
| 6" *(Ctr to Ctr)   | SMX-122660                   | <b>\$99.50</b>  |
| 6.5" *(Ctr to Ctr) | SMX-122665                   | <b>\$99.50</b>  |
| 7" *(Ctr to Ctr)   | SMX-122670                   | <b>\$99.50</b>  |
| 7.5" *(Ctr to Ctr) | SMX-122675                   | <b>\$99.50</b>  |
| 4" Lift (Approx)   | 8" *(Ctr to Ctr) SMX-122680  | <b>\$149.95</b> |
| 5" Lift (Approx)   | 9" *(Ctr to Ctr) SMX-122690  | <b>\$149.95</b> |
| 6" Lift (Approx)   | 10" *(Ctr to Ctr) SMX-122610 | <b>\$149.95</b> |
| 7" Lift (Approx)   | 11" *(Ctr to Ctr) SMX-122611 | <b>\$149.95</b> |

## 2000-2002 RAM 2500/3500 4x4

### Stock

SKU# SMX-1225  
12MM Stud with taper  
Length: **4.5"** \*(Ctr to Ctr)  
**\$94<sup>50</sup>**

### Leveled

SKU# SMX-1225L  
12MM Stud with taper  
Length: **5.5"** \*(Ctr to Ctr)  
**\$99<sup>50</sup>**

### Lifted 12MM Stud With Taper

|                    |                              |                 |
|--------------------|------------------------------|-----------------|
| 6" *(Ctr to Ctr)   | SMX-122560                   | <b>\$99.95</b>  |
| 6.5" *(Ctr to Ctr) | SMX-122565                   | <b>\$99.95</b>  |
| 7" *(Ctr to Ctr)   | SMX-122570                   | <b>\$99.95</b>  |
| 7.5" *(Ctr to Ctr) | SMX-122575                   | <b>\$99.95</b>  |
| 4" Lift (Approx)   | 8" *(Ctr to Ctr) SMX-122580  | <b>\$149.95</b> |
| 5" Lift (Approx)   | 9" *(Ctr to Ctr) SMX-122590  | <b>\$149.95</b> |
| 6" Lift (Approx)   | 10" *(Ctr to Ctr) SMX-122510 | <b>\$149.95</b> |
| 7" Lift (Approx)   | 11" *(Ctr to Ctr) SMX-122511 | <b>\$149.95</b> |

# MAXXLINKS

SOLD IN PAIRS

## 1998-1999 RAM 2500/3500 4X4

### Stock

SKU# SMX-122445  
12MM Stud slight taper  
Length: **4.5"** \*(Ctr to Ctr)  
**\$94<sup>50</sup>**

### Leveled

SKU# SMX-122455  
12MM stud slight taper  
Length: **5.5"** \*(Ctr to Ctr)  
**\$99<sup>50</sup>**

### Lifted 12MM Stud Slight Taper

|                    |                   |                 |
|--------------------|-------------------|-----------------|
| 6" *(Ctr to Ctr)   | SMX-122460        | <b>\$99.50</b>  |
| 6.5" *(Ctr to Ctr) | SMX-122465        | <b>\$99.50</b>  |
| 7" *(Ctr to Ctr)   | SMX-122470        | <b>\$99.50</b>  |
| 7.5" *(Ctr to Ctr) | SMX-122475        | <b>\$99.50</b>  |
| 4" Lift (Approx)   | 8" *(Ctr to Ctr)  | <b>\$149.95</b> |
| 5" Lift (Approx)   | 9" *(Ctr to Ctr)  | <b>\$149.95</b> |
| 6" Lift (Approx)   | 10" *(Ctr to Ctr) | <b>\$149.95</b> |
| 7" Lift (Approx)   | 11" *(Ctr to Ctr) | <b>\$149.95</b> |

## April 1995-1997 RAM 2500/3500 4x4

### Stock

SKU# SMX-1224  
12MM Stud slight taper  
Length: **3.5"** \*(Ctr to Ctr)  
**\$94<sup>50</sup>**

### Leveled

SKU# SMX-1224i  
12MM Stud slight taper  
Length: **3.0"** \*(Ctr to Ctr)  
**\$99<sup>50</sup>**

**\*NOTICE:** Early Ram models have inverted sway bay links. Longer sway bar links will not work with the inverted tower design. Shorter sway bar links required for leveled trucks

## 1994-March 1995 RAM 2500/3500 4x4

### Stock

SKU# SMX-1222  
12MM Short Stud  
Length: **3.5"** \*(Ctr to Ctr)  
**\$94<sup>50</sup>**

### Leveled

SKU# SMX-1222i  
12MM Stud slight taper  
Length: **3.0"** \*(Ctr to Ctr)  
**\$94<sup>50</sup>**

**\*NOTICE:** Early Ram models have inverted sway bar links. Longer sway bar links will not work with the inverted tower design. Shorter sway bar links required for leveled trucks

## 2003-2013 2500/3500 RAM 2WD

### Stock

SKU# SMX-1229  
Length: **7.5"** \*(Ctr to Ctr)  
**\$139<sup>50</sup>**

## CHEVROLET/GMC SWAY BAR END LINKS OEM LENGTHS

### 2002-2003 Chevrolet Trailblazer / GMC Envoy

#### Front Sway Bar Links

12MM Short stud  
SKU# SMX-K666F  
**\$104<sup>90</sup>**

### 2004-2007 Chevrolet Trailblazer / GMC Envoy

#### Front Sway Bar Links

SKU# SMX-K8082  
**\$104<sup>90</sup>**

### 2002-2009 Chevrolet Trailblazer / GMC Envoy

#### Rear Sway Bar Links

**Stock**  
12MM Short stud  
SKU# SMX-K666R  
**\$104<sup>90</sup>**

# ACCESSORIES

2001-2010 GM 2500/3500

EXTENDED LENGTH BUMP STOPS

## EXTENDED LENGTH BUMP STOPS

SKU# SMX-2535

Heavy Duty Rubber replacement bump stops for your 2500 or 3500 Silverado. Replace your worn foam or missing bump stops. The rubber compound will not breakdown and fall apart like the soft foam original design. Our bump stops are made from Superior materials and great for snow plows or anyone needing to replace their factory bump stops.

**E**

**1/2**  
**HR**

**SMX-2535**  
**\$87<sup>95</sup>**



2004-2012 COLORADO /CANYON 4x4 & TORSION BAR 2WD

1.5" BODY LIFT

## 1.5" BODY LIFT

SKU# SMX-CC17 (CREW-CAB)

SMX-CC15 (STANDARD & EXTENDED-CAB)

Thoroughly engineered by Suspension Maxx for the Colorado / Canyon enthusiast looking for a extra lift. The body lift comes complete with:

- Front bumper relocation brackets.
- Steering Extension
- Rear bumper gap guard.
- Grade 10.9 high quality hardware
- High grade nylon body lift spacers
- Aluminum Crush blocks for the pickup box

**M**

**4-5**  
**HR**

**SMX-CC17/15**  
**\$279<sup>95</sup>**



2004-2012 COLORADO /CANYON 4x4 & TORSION BAR 2WD

BALL JOINT SPACER

## BALL JOINT SPACER KIT

(BALL JOINT FLIP)

SKU# SMX-355Z71BJ

Do you have a lifted Colorado or Canyon and are trying to clear 33" tires? By adding the Suspension Maxx Ball joint spacer you can relieve excessive ball joint stress when lifting your truck three or more inches. It also allows the upper control arm more freedom of movement and greater articulation of the suspension. Adding the ball joint spacer improves the upper ball joint angle, extending ball joint life by putting less stress on the ball joint boot. All of our ball joint spacers are precision stamped steel design, zinc coated to protect against corrosion and include 10.9 grade fasteners with full instructions.

**M**

**1-2**  
**HR**

**SMX-355Z71BJ**  
**\$32<sup>50</sup>**



# PARTS LIST

## TOOLS

### TORSION BAR UNLOADER TOOLS

| Description   | Price    | Part Number                |
|---|----------|----------------------------|
| Torsion Bar Tool fits all models <b>INCLUDING</b> 2011-2018 GM 2500HD/3500HD, Ford Ranger/Explorer/Sport Trac | \$169.95 | <a href="#">SMX-2011MT</a> |

## CHEVROLET/GMC

### 1500 SILVERADO/SIERRA FRONT LEVELING KITS

| Year Range | Make          | Model  | Lift Height | Tire Size | Price    | Part Number                |
|------------|---------------|--|-------------|-----------|----------|----------------------------|
| 2015-2018  | Chevrolet/GMC | 1500 Silverado/Sierra Denali w/ MagneRide                              | 1.5-2.5"    | 33"       | \$169.95 | <a href="#">SMX-GM725M</a> |
| 2015-2018  | Chevrolet/GMC | 1500 Silverado/Sierra Denali w/ MagneRide                              | 1.5"        | N/A"      | \$89.95  | <a href="#">SMX-GM715M</a> |
| 2015-2018  | Chevrolet/GMC | 1500 Silverado/Sierra Denali w/ MagneRide                              | 1"          | N/A"      | \$79.95  | <a href="#">SMX-GM710M</a> |
| 2007-2018  | Chevrolet/GMC | 1500 Silverado/Sierra  | 1.5-2.5"    | 33"       | \$159.95 | <a href="#">SMX-GM725</a>  |
| 2007-2018  | Chevrolet/GMC | 1500 Silverado/Sierra  | 1.5"        | N/A"      | \$79.95  | <a href="#">SMX-GM715</a>  |
| 2007-2018  | Chevrolet/GMC | 1500 Silverado/Sierra  | 1"          | N/A"      | \$69.95  | <a href="#">SMX-GM710</a>  |
| 1999-2007  | Chevrolet/GMC | 1500 Silverado/Sierra "Classic" 6 bolt 4x4s Full-size w/ torsion bars  | 1-3"        | 33"       | \$249.95 | <a href="#">SMX-MC2</a>    |
| 1988-1998  | Chevrolet/GMC | K1500 Silverado/Sierra "Classic" 6 bolt 4x4s Full-size w/ torsion bars | 1-2"        | 33"       | \$249.95 | <a href="#">SMX-MC2</a>    |

### 2500/3500 SILVERADO/SIERRA ACCESSORIES

| Year Range | Make          | Model                                      | Lift Height | Tire Size | Price    | Part Number                 |
|------------|---------------|--|-------------|-----------|----------|-----------------------------|
| 2011-2018  | Chevrolet/GMC | 2500/3500 Silverado/Sierra w/ torsion bars | 2-3"        | -         | \$599.99 | <a href="#">SMX-11HDUCA</a> |

### 2500/3500 SILVERADO/SIERRA FRONT LEVELING KITS

| Year Range | Make          | Model   | Lift Height | Tire Size | Price    | Part Number               |
|------------|---------------|---|-------------|-----------|----------|---------------------------|
| 2017-2018  | Chevrolet/GMC | 2500/3500 Silverado/Sierra w/ torsion bars              | 1-2.5"      | 34"       | \$336.95 | <a href="#">SMX-MC7</a>   |
| 2015-2016  | Chevrolet/GMC | 2500/3500 Silverado/Sierra w/ torsion bars              | 1-2.5"      | 34"       | \$306.99 | <a href="#">SMX-MC5</a>   |
| 2011-2014  | Chevrolet/GMC | 2500/3500 Silverado/Sierra w/ torsion bars              | 1-2.5"      | 34"       | \$299.95 | <a href="#">SMX-MC3</a>   |
| 2001-2010  | Chevrolet/GMC | 1500HD/2500/3500 Silverado/Sierra w/ torsion bars       | 1-2.5"      | 33"       | \$249.99 | <a href="#">SMX-MC2HD</a> |
| 1988-2000  | Chevrolet/GMC | "Old-Body" K2500/K3500 Silverado/Sierra w/ torsion bars | 1-2"        | 33"       | \$249.99 | <a href="#">SMX-MC2</a>   |

# PARTS LIST

## CHEVROLET/GMC (CONTINUED)

| TAHOE/SUBURBAN/YUKON/TRAILBLAZER FRONT KITS |               |                                    |             |           |          |                            |
|---|---------------|------------------------------------|-------------|-----------|----------|----------------------------|
| Year Range                                  | Make          | Model                              | Lift Height | Tire Size | Price    | Part Number                |
| 2015-2018                                   | Chevrolet/GMC | Tahoe/Suburban/Yukon w/ MagneRide  | 1-2.5"      | 33"       | \$169.95 | <a href="#">SMX-GM725M</a> |
| 2015-2018                                   | Chevrolet/GMC | Tahoe/Suburban/Yukon w/ MagneRide  | 1.5"        | N/A"      | \$89.95  | <a href="#">SMX-GM715M</a> |
| 2015-2018                                   | Chevrolet/GMC | Tahoe/Suburban/Yukon w/ MagneRide  | 1"          | N/A"      | \$79.95  | <a href="#">SMX-GM710M</a> |
| 2007-2018                                   | Chevrolet/GMC | Tahoe/Suburban/Yukon               | 1-2.5"      | 33"       | \$159.95 | <a href="#">SMX-GM725</a>  |
| 2007-2018                                   | Chevrolet/GMC | Tahoe/Suburban/Yukon               | 1.5"        | N/A"      | \$79.95  | <a href="#">SMX-GM715</a>  |
| 2007-2018                                   | Chevrolet/GMC | Tahoe/Suburban/Yukon               | 1"          | N/A"      | \$69.95  | <a href="#">SMX-GM710</a>  |
| 2007-2013                                   | Chevrolet     | Avalanche                          | 1-2.5"      | 33"       | \$159.95 | <a href="#">SMX-GM725</a>  |
| 2007-2013                                   | Chevrolet     | Avalanche                          | 1.5"        | 33"       | \$79.95  | <a href="#">SMX-GM715</a>  |
| 2007-2013                                   | Chevrolet     | Avalanche                          | 1"          | 33"       | \$69.95  | <a href="#">SMX-GM715</a>  |
| 2002-2006                                   | Chevrolet     | Avalanche 1500                     | 1-2.5"      | 33"       | \$249.99 | <a href="#">SMX-MC2</a>    |
| 2002-2006                                   | Chevrolet     | Avalanche 2500                     | 1-2.5"      | 33"       | \$249.99 | <a href="#">SMX-MC2HD</a>  |
| 1992-2006                                   | Chevrolet/GMC | GM SUV w/ Torsion Bars             | 1-2.5"      | 33"       | \$249.99 | <a href="#">SMX-MC2</a>    |
| 2002-2014                                   | Chevrolet/GMC | Tahoe/Suburban/Yukon/Yukon XL 2500 | 1-2.5"      | 33"       | \$249.99 | <a href="#">SMX-MC2HD</a>  |
| 2002-2009                                   | Chevrolet/GMC | Trailblazer/Envoy                  | 2.5"        | 30.7"     | \$149.95 | <a href="#">SMX-250XL</a>  |
| 2002-2009                                   | Chevrolet/GMC | Trailblazer/Envoy                  | 1.75"       | 30.7"     | \$111.50 | <a href="#">SMX-10125</a>  |

| TAHOE/SUBURBAN/YUKON/TRAILBLAZER REAR KITS |               |  |      |      |         |                            |
|--|---------------|--|------|------|---------|----------------------------|
| Year Range                                 | Make          | Model  | Lift | Tire | Price   | Part Number                |
| 2002-2018                                  | Chevrolet/GMC | Tahoe/Suburban/TrailBlazer/Avalanche/Yukon/Yukon XL/Envoy w/ Coil            | 1"   | N/A" | \$84.50 | <a href="#">SMX-15100</a>  |
| 2002-2018                                  | Chevrolet/GMC | Tahoe/Suburban/TrailBlazer/Avalanche/Yukon/Yukon XL/Envoy w/ Coil            | 1.5" | N/A" | \$84.50 | <a href="#">SMX-15150</a>  |
| 2002-2018                                  | Chevrolet/GMC | Tahoe/Suburban/TrailBlazer/Avalanche/Yukon/Yukon XL/Envoy w/ Coil            | 2"   | N/A" | \$84.50 | <a href="#">SMX-15200</a>  |
| 2002-2018                                  | Chevrolet/GMC | Tahoe/Suburban/TrailBlazer/Avalanche/Yukon/Yukon XL/Envoy w/ Coil+ MagneRide | 1"   | N/A" | \$84.50 | <a href="#">SMX-15100M</a> |
| 2002-2018                                  | Chevrolet/GMC | Tahoe/Suburban/TrailBlazer/Avalanche/Yukon/Yukon XL/Envoy w/ Coil+ MagneRide | 1.5" | N/A" | \$84.50 | <a href="#">SMX-15150M</a> |

| COLORADO/CANYON FRONT LEVELING KITS |               |  |             |           |          |                            |
|-------------------------------------|---------------|--|-------------|-----------|----------|----------------------------|
| Year Range                          | Make          | Model  | Lift Height | Tire Size | Price    | Part Number                |
| 2015-2018                           | Chevrolet/GMC | Colorado/Canyon 2WD/4WD                      | 2.5"        | 32"       | \$149.95 | <a href="#">SMX-10195</a>  |
| 2004-2012                           | Chevrolet/GMC | Colorado/Canyon 2WD Z71 / 4WD                | 1-3"        | 32"       | \$264.95 | <a href="#">SMX-MCJRC</a>  |
| 2004-2012                           | Chevrolet/GMC | Colorado/Canyon 2WD coil on strut suspension | 2.5"        | 31"       | \$249.95 | <a href="#">SMX-10185X</a> |

| COLORADO/CANYON REAR LEVELING KITS |               |                 |             |           |          |                           |
|------------------------------------|---------------|-----------------|-------------|-----------|----------|---------------------------|
| Year Range                         | Make          | Model           | Lift Height | Tire Size | Price    | Part Number               |
| 2009-2012                          | Chevrolet/GMC | Colorado/Canyon | 1-2"        | N/A       | \$129.95 | <a href="#">SMX-15408</a> |
| 2004-2008                          | Chevrolet/GMC | Colorado/Canyon | 1-2"        | N/A       | \$129.95 | <a href="#">SMX-15400</a> |

| S-10 FRONT LEVELING KITS |               |                                   |             |           |          |                           |
|--------------------------|---------------|-----------------------------------|-------------|-----------|----------|---------------------------|
| Year Range               | Make          | Model                             | Lift Height | Tire Size | Price    | Part Number               |
| 1988-2004                | Chevrolet/GMC | S-10/S-15/Jimmy/Blazer/ZR2 models | 1-2.5"      | 31.5"     | \$179.95 | <a href="#">SMX-MCS10</a> |

# PARTS LIST

## HUMMER

### HUMMER FRONT LEVELING KITS

| Year Range | Make   | Model              | Lift Height | Tire Size | Price    | Part Number               |
|------------|--------|--------------------|-------------|-----------|----------|---------------------------|
| 2006-2010  | Hummer | H3 w/ torsion bars | 1-3"        | 35"       | \$264.95 | <a href="#">SMX-MCJRH</a> |
| 2003-2010  | Hummer | H2                 | 1-2.5"      | 37"       | \$249.99 | <a href="#">SMX-MC2HD</a> |

### HUMMER REAR LEVELING KITS

| Year Range | Make   | Model                   | Lift Height | Tire Size | Price    | Part Number                |
|------------|--------|-------------------------|-------------|-----------|----------|----------------------------|
| 2006-2010  | Hummer | H3                      | 1"          | N/A"      | \$129.95 | <a href="#">SMX-15400H</a> |
| 2003-2010  | Hummer | H2 w/ rear coil springs | 1"          | N/A       | \$84.50  | <a href="#">SMX-15100</a>  |
| 2003-2010  | Hummer | H2 w/ rear coil springs | 1.5"        | N/A       | \$84.50  | <a href="#">SMX-15150</a>  |
| 2003-2010  | Hummer | H2 w/ rear coil springs | 2"          | N/A       | \$84.50  | <a href="#">SMX-15200</a>  |

## DODGE/RAM

### RAM FRONT LEVELING KITS

| Year Range | Make  | Model                        | Lift Height | Tire Size | Price    | Part Number               |
|------------|-------|------------------------------|-------------|-----------|----------|---------------------------|
| 2009-2018  | Dodge | Ram 1500 4x4 (non-Mega-Cab)  | 3"          | 33"       | \$239.95 | <a href="#">SMX-RM610</a> |
| 2006-2008  | Dodge | Ram 1500 4x4 (non-Mega-Cab)  | 2.5"        | 33"       | \$189.50 | <a href="#">SMX-RM6</a>   |
| 2002-2005  | Dodge | Ram 1500 4x4 w/ torsion bars | 1-2"        | 33"       | \$249.95 | <a href="#">SMX-RMC</a>   |
| 1994-2001  | Dodge | Ram 4x4 1500                 | 2"          | 33"       | \$229.95 | <a href="#">SMX-10200</a> |
| 1994-2001  | Dodge | Ram 4x4 1500                 | 3"          | 33"       | \$239.95 | <a href="#">SMX-10230</a> |

### RAM REAR LEVELING KITS

| Year Range | Make  | Model                | Lift Height | Tire Size | Price   | Part Number               |
|------------|-------|----------------------|-------------|-----------|---------|---------------------------|
| 2009-2018  | Dodge | Ram 1500 2wd and 4x4 | 1.5"        | N/A       | \$84.50 | <a href="#">SMX-17150</a> |
| 2009-2018  | Dodge | Ram 1500 2wd and 4x4 | 2"          | N/A       | \$84.50 | <a href="#">SMX-17200</a> |

### RAM 2500/3500 FRONT LEVELING KITS

| Year Range               | Make  | Model   | Lift Height | Tire Size | Price    | Part Number               |
|--------------------------|-------|---|-------------|-----------|----------|---------------------------|
| 2014-2018<br>2013.5-2018 | Dodge | 2014-2016 Ram 2500 / 2013.5-2016 Ram 3500 4x4 | 2.5"        | 35"       | \$249.95 | <a href="#">SMX-10214</a> |
| 1994-2013<br>1994-2013.5 | Dodge | 1994-2013 Ram 2500 / 1994-2013.5 Ram 3500 4x4 | 2"          | 33"       | \$229.95 | <a href="#">SMX-10200</a> |
| 1994-2013<br>1994-2013.5 | Dodge | 1994-2013 Ram 2500 / 1994-2013.5 Ram 3500 4x4 | 3"          | 33"       | \$239.95 | <a href="#">SMX-10230</a> |

### DAKOTA/DURANGO FRONT LEVELING KITS

| Year Range | Make           | Model                         | Lift Height | Tire Size | Price    | Part Number               |
|------------|----------------|-------------------------------|-------------|-----------|----------|---------------------------|
| 2004-2010  | Dodge          | Dakota                        | 2-2.5"      | 32"       | \$189.50 | <a href="#">SMX-DAK4</a>  |
| 1997-2004  | Dodge          | Dakota w/ torsion bars        | 1-2.5"      | 32"       | \$249.95 | <a href="#">SMX-RMCJR</a> |
| 2004-2010  | Dodge/Chrysler | Durango/Aspen w/ torsion bars | 1-2.5"      | 32"       | \$249.95 | <a href="#">SMX-DC5</a>   |



# PARTS LIST

## FORD

### F-150 FRONT LEVELING KITS

| Year Range | Make | Model  | Lift Height | Tire Size | Price    | Part Number             |
|------------|------|--|-------------|-----------|----------|-------------------------|
| 2014-2018  | Ford | F-150 w/ Coil over struts  | 2-2.5"      | 33"       | \$209.95 | <a href="#">SMX-FD6</a> |
| 2004-2013  | Ford | F-150 w/ Coil over struts  | 2-2.5"      | 33"       | \$219.95 | <a href="#">SMX-FD4</a> |
| 1997-2004  | Ford | F-150 4x4 Includes (2004 Heritage) / 1997-02 Expedition with torsion bars (1998-1999) F-250 Light Duty 7 Lug | 1-2.5"      | 33"       | \$199.95 | <a href="#">SMX-FXC</a> |

### F-150 FRONT LEVELING KITS

| Year Range | Make | Model                      | Lift Height | Tire Size | Price    | Part Number               |
|------------|------|----------------------------|-------------|-----------|----------|---------------------------|
| 2005-2016  | Ford | F-250/F-350 Super Duty 4x4 | 1"          | 35"       | \$119.95 | <a href="#">SMX-10330</a> |
| 2005-2016  | Ford | F-250/F-350 Super Duty 4x4 | 1.5"        | 35"       | \$119.95 | <a href="#">SMX-10340</a> |
| 2005-2012  | Ford | F-250/F-350 Super Duty 4x4 | 2.5"        | 35"       | \$179.95 | <a href="#">SMX-10350</a> |

### FORD FRONT LEVELING KITS

| Year Range | Make | Model   | Lift Height | Tire Size | Price    | Part Number             |
|------------|------|---|-------------|-----------|----------|-------------------------|
| 1995-2000  | Ford | 1995-2000 Explorer Sport Trac 1997-2013 Ranger 4x4 & 2wd + Torsion bars | 1-2.5"      | 32"       | \$179.95 | <a href="#">SMX-MCR</a> |

## TOYOTA

### TUNDRA FRONT LEVELING KITS

| Year Range | Make   | Model  | Lift Height | Tire Size | Price    | Part Number               |
|------------|--------|--------|-------------|-----------|----------|---------------------------|
| 2007-2018  | Toyota | Tundra | 2"          | 33"       | \$229.95 | <a href="#">SMX-TD720</a> |
| 2007-2018  | Toyota | Tundra | 2.5"        | 33"       | \$229.95 | <a href="#">SMX-TD725</a> |
| 2007-2018  | Toyota | Tundra | 3"          | 33"       | \$229.95 | <a href="#">SMX-TD730</a> |
| 2001-2006  | Toyota | Tundra | 2-2.5"      | 32"       | \$219.95 | <a href="#">SMX-TD425</a> |

### TACOMA/FJ CRUISER FRONT LEVELING KITS

| Year Range | Make   | Model          | Lift Height | Tire Size | Price    | Part Number              |
|------------|--------|----------------|-------------|-----------|----------|--------------------------|
| 2005-2018  | Toyota | Tacoma         | 2-2.5"      | 31.6"     | \$219.95 | <a href="#">SMX-TC5</a>  |
| 1995-2004  | Toyota | Tacoma         | 2-2.5"      | 31.6"     | \$219.95 | <a href="#">SMX-9504</a> |
| 2007-2010  | Toyota | FJ Cruiser 4x4 | 2-2.5"      | 33"       | \$242.95 | <a href="#">SMX-FJ7</a>  |







Find us on



SuspensionMaxx Inc.  
1692 Marquette Ave.  
Bay City, MI 48706

**SUSPENSIONMAXX.COM**  
**1-888-629-9226**



For videos and tutorials find us on YouTube  
**suspensionmaxxman**

