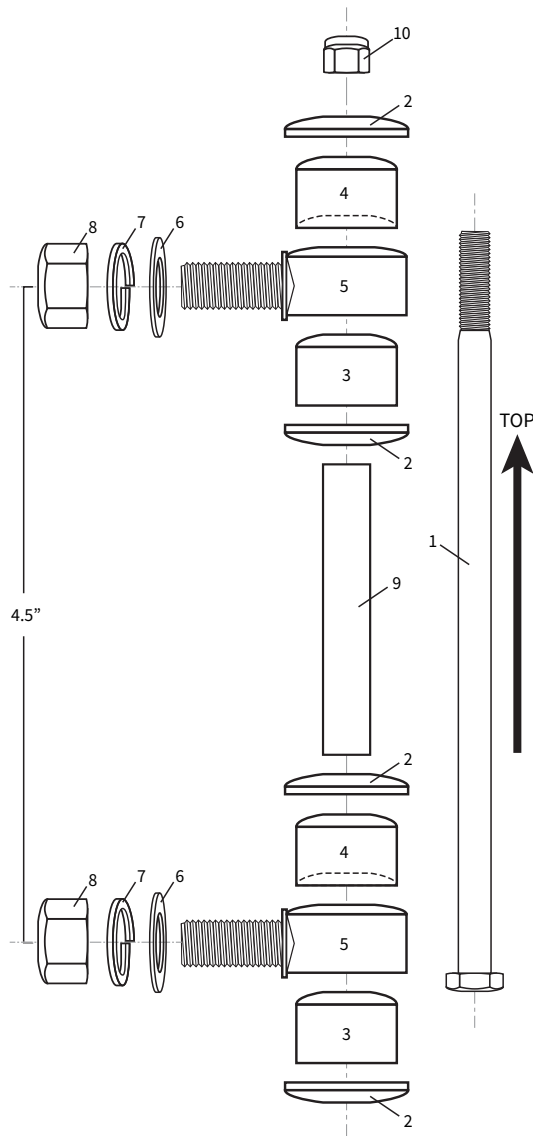


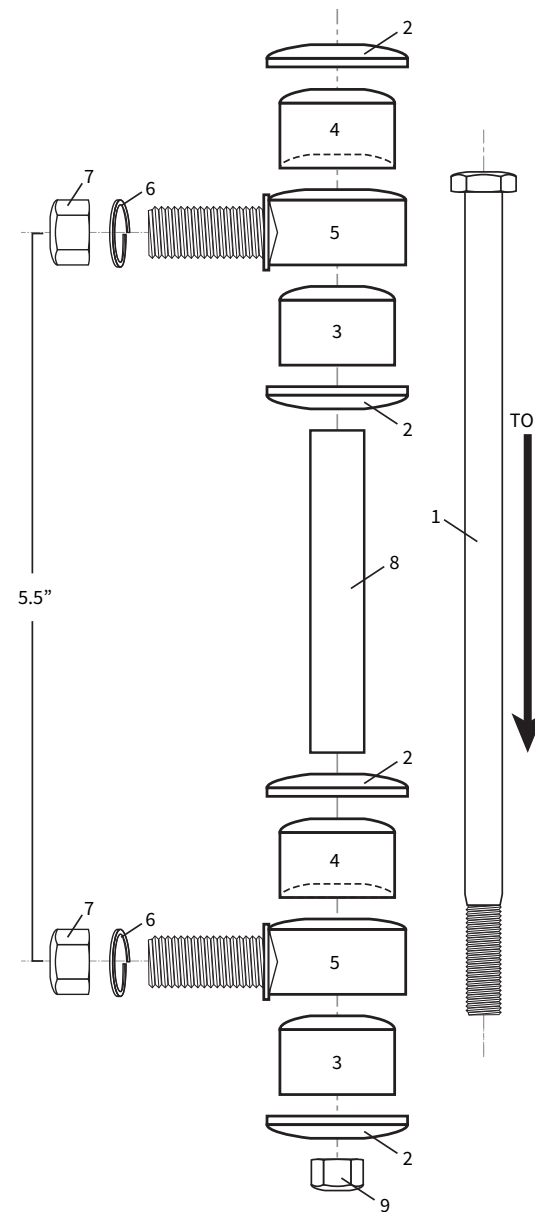
FRONT SWAY BAR LINK ASSEMBLY



K8082			
#	PART NAME	GRAPHIC FORM	QTY
1	3/8 Bolt (7")		1PC
2	Small Dia. Stainless Washer		4PC
3	Eyelet Bushing w/ Flat Bottom		2PC
4	Eyelet Bushing w/ Concave Bottom		2PC
5	Link Eyelet (K8082)		2PC
6	Flat Washer 9/16 SAE		2PC
7	Split-Lock Washer 9/16 SAE		2PC
8	Stover Lock Nut 9/16		2PC
9	Sleeve 2-1/4"		1PC
10	Nylock Lock Nut 3/8"		1PC

NOTE:
K8082 3.75 (TONY) requires:
- 3/8 BOLT (6.5")
- Sleeve (1-13/16")

REAR SWAY BAR LINK ASSEMBLY



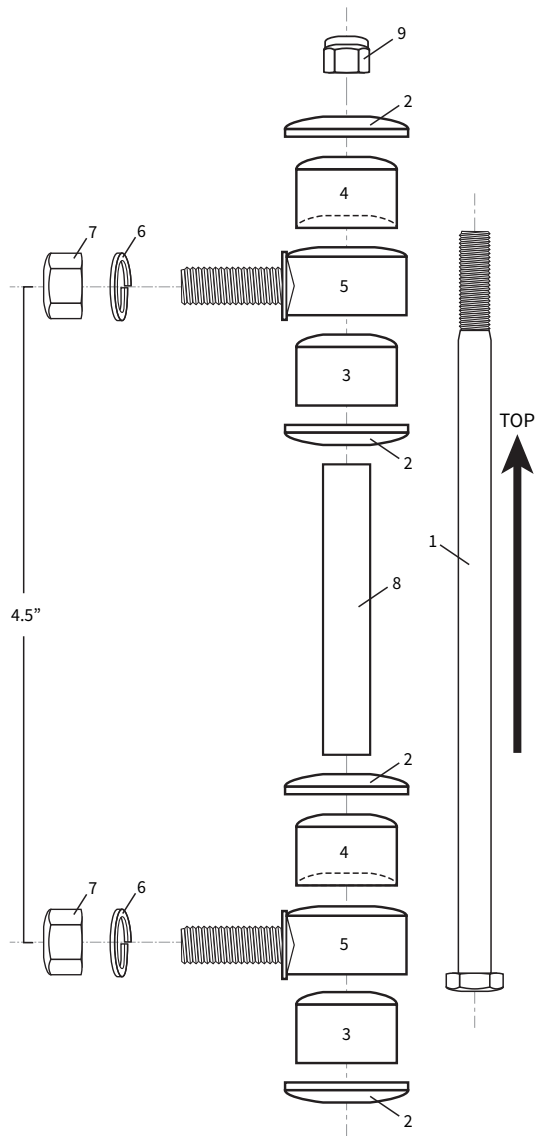
K666R			
#	PART NAME	GRAPHIC FORM	QTY
1	3/8 Bolt (8")		1PC
2	Small Dia. Stainless Washer		4PC
3	Eyelet Bushing w/ Flat Bottom		2PC
4	Eyelet Bushing w/ Concave Bottom		2PC
5	Link Eyelet (1224S)		2PC
6	Split-Lock Washer 12mm		2PC
7	Stover Lock Nut 12mm x 1.5		2PC
8	Sleeve 3-3/8"		1PC
9	Stover Lock Nut 3/8"		1PC

NOTE:
K666R 4.0 requires:
- 3/8 BOLT (7")
- Sleeve (2-1/16")

Pay Close attention to the bushing compression of the sway bar end links. Over Compression will drastically shorten sway bar link bushing life expectancy and lead to cracking and splitting of the sway bar end link bushings. The proper compression of the sway bar link vertical bolt is done by simply tightening the vertical bolt until zero clearance between nut and Stainless Steel washer. Continue to tighten an additional 1.5 turns to set proper busing compression. If you continue to compress the sway bar links you will notice the lower axle mount bushings will begin to swell growing increasingly larger in diameter. Very little to no bushing compression is ideal. See detailed images below as a guide.

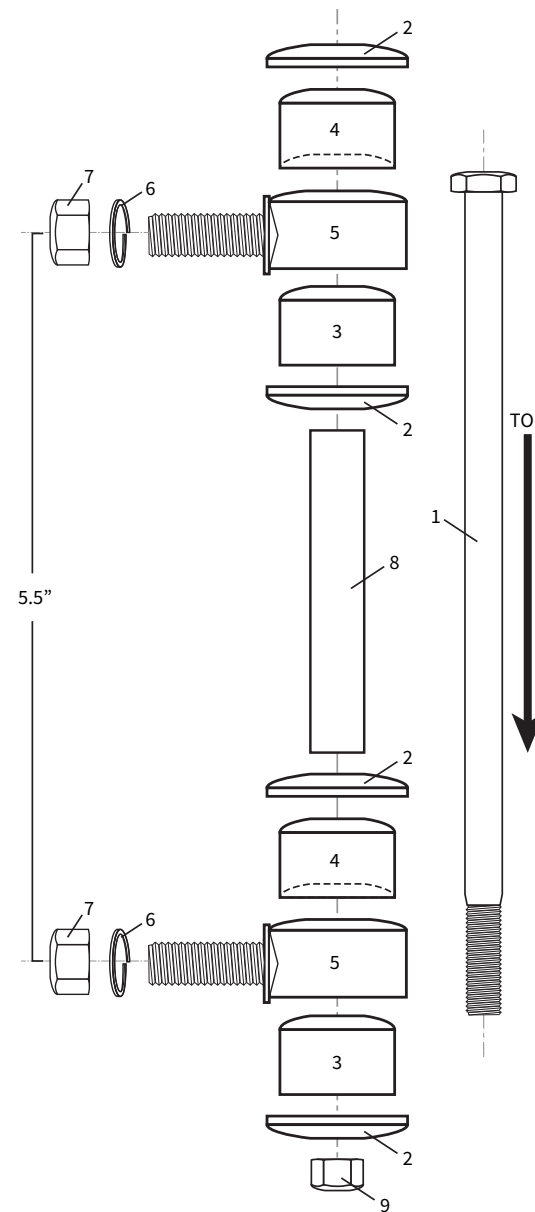
RECOMMENDED TO BE INSTALLED WITH VEHICLE ON LEVEL SURFACE, NOT ON HOIST OR JACK STANDS.

FRONT SWAY BAR LINK ASSEMBLY



K666F				
#	PART NAME	GRAPHIC FORM	QTY	
1	3/8 Bolt (7")		1PC	
2	Small Dia. Stainless Washer		4PC	
3	Eyelet Bushing w/ Flat Bottom		2PC	
4	Eyelet Bushing w/ Concave Bottom		2PC	
5	Link Eyelet (1224S)		2PC	
6	Split-Lock Washer 12mm		2PC	
7	Stover Lock Nut 12mm x 1.5		2PC	
8	Sleeve 2-1/4"		1PC	
9	Nylock Lock Nut 3/8"		1PC	

REAR SWAY BAR LINK ASSEMBLY



K666R				
#	PART NAME	GRAPHIC FORM	QTY	
1	3/8 Bolt (8")		1PC	
2	Small Dia. Stainless Washer		4PC	
3	Eyelet Bushing w/ Flat Bottom		2PC	
4	Eyelet Bushing w/ Concave Bottom		2PC	
5	Link Eyelet (1224S)		2PC	
6	Split-Lock Washer 12mm		2PC	
7	Stover Lock Nut 12mm x 1.5		2PC	
8	Sleeve 3-3/8"		1PC	
9	Stover Lock Nut 3/8"		1PC	

NOTE:

K666R 4.0 requires:
 - 3/8 BOLT (7")
 - Sleeve (2-1/16")

Pay Close attention to the bushing compression of the sway bar end links. Over Compression will drastically shorten sway bar link bushing life expectancy and lead to cracking and splitting of the sway bar end link bushings. The proper compression of the sway bar link vertical bolt is done by simply tightening the vertical bolt until zero clearance between nut and Stainless Steel washer. Continue to tighten an additional 1.5 turns to set proper busing compression. If you continue to compress the sway bar links you will notice the lower axle mount bushings will begin to swell growing increasingly larger in diameter. Very little to no bushing compression is ideal. See detailed images bellow as a guide.

RECOMMENDED TO BE INSTALLED WITH VEHICLE ON LEVEL SURFACE, NOT ON HOIST OR JACK STANDS.